

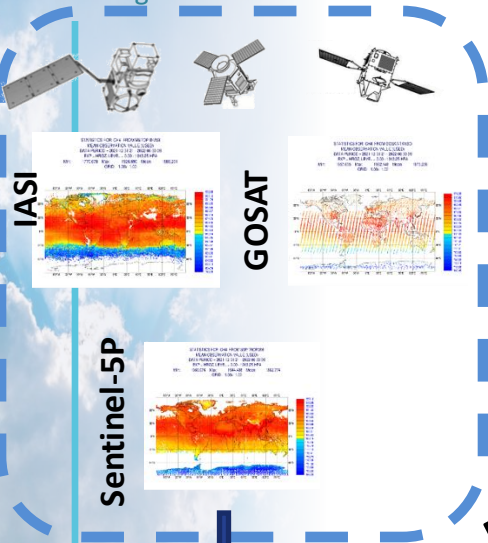


CAMS : Copernicus atmosphere monitoring Service

Laurence.rouil@ecmwf.int

Atmosphere Monitoring

Current analysis: IASI and GOSAT assimilated in the CAMS IFS_GHG e/o suite

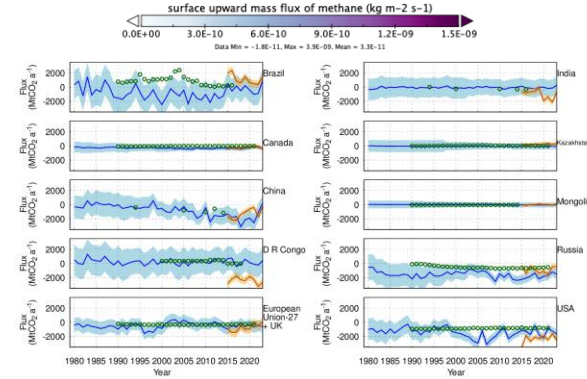
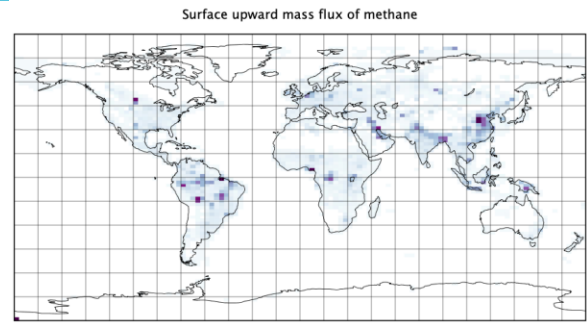
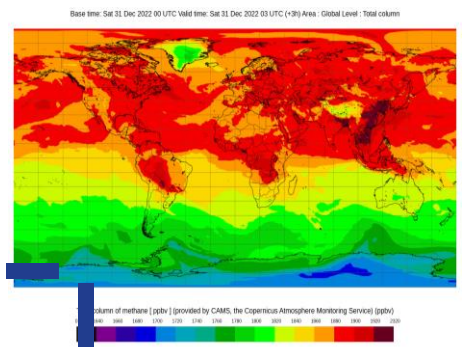
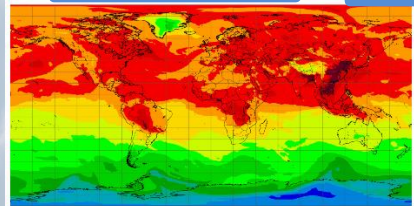


Medium-range forecast



Daily analyses (4 days behind near-real time) at ~25km and forecasts in real-time at ~9km resolution

CAMS forecasts: <https://atmosphere.copernicus.eu/charts/packages/cams>



GHG emission fluxes based on inverse modelling



PROGRAMME OF THE EUROPEAN UNION

IMPLEMENTED BY Europe's eyes on Earth

