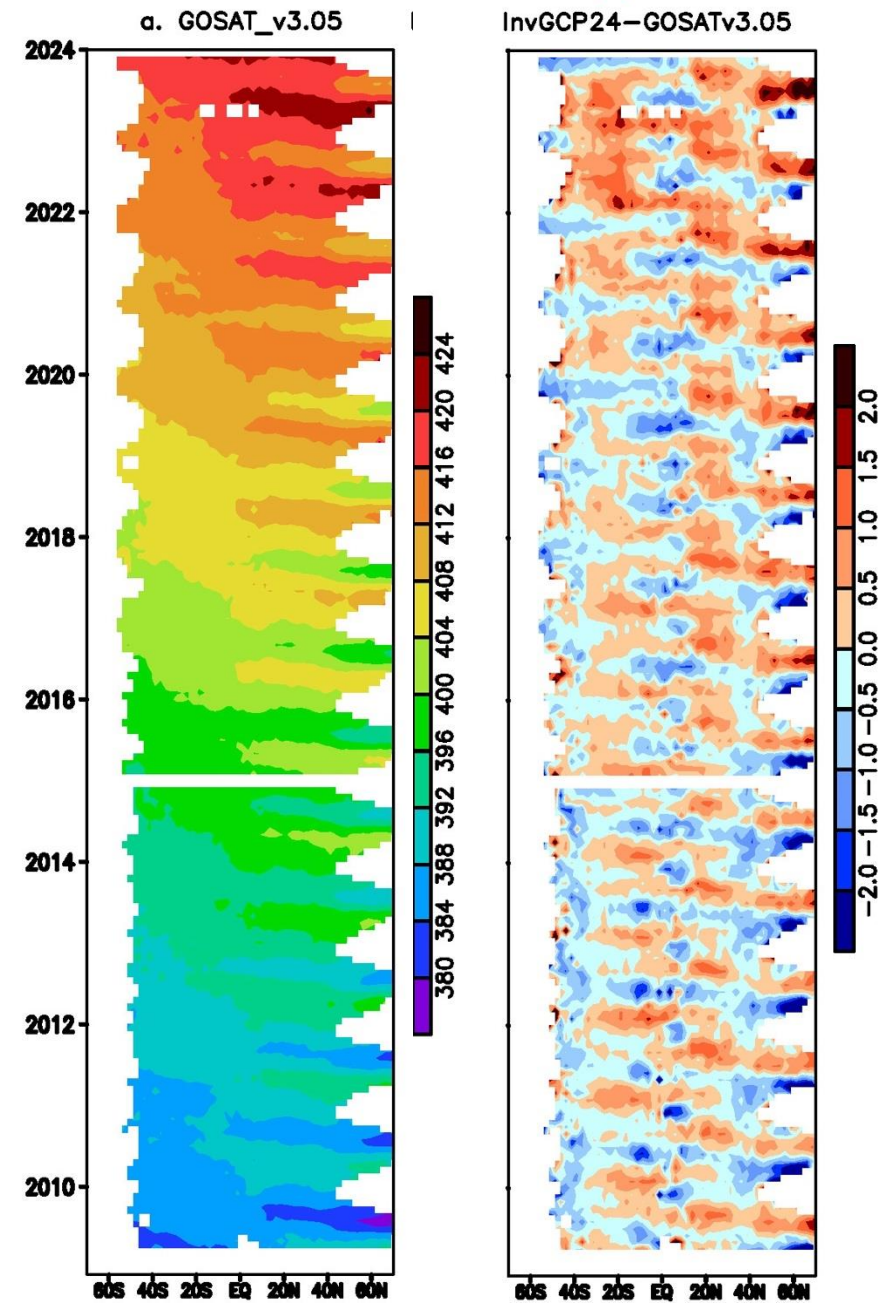
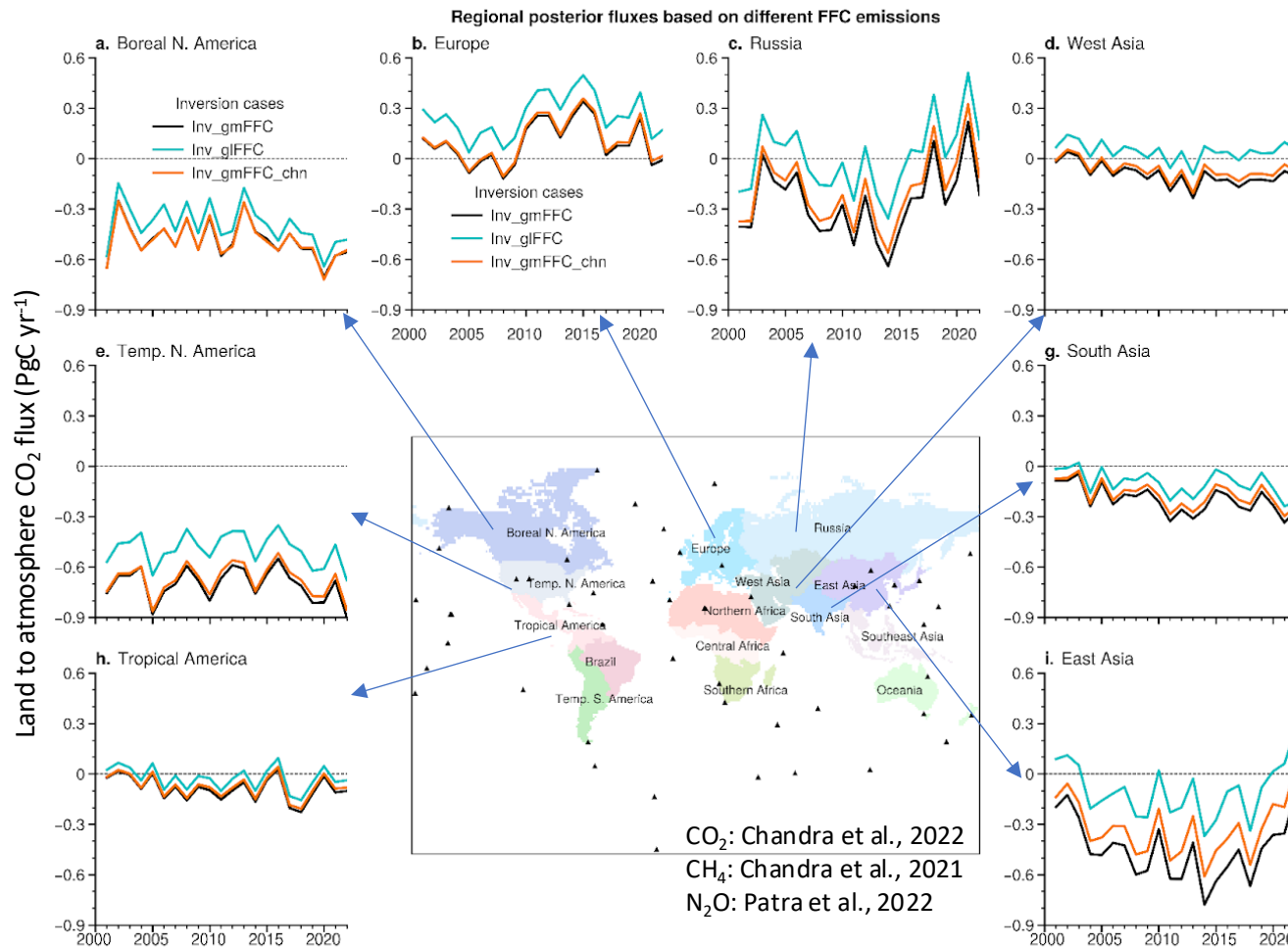


GOSAT for country reporting and UNFCCC GSTs

Prabir K. Patra, JAMSTEC, Yokohama/RIHN, Kyoto

- ❖ On the Earth Information Day (11 Nov), countries asked to clarify emissions that are leading to the increase in global CO₂, CH₄ and N₂O concentrations
- ❖ In JAMSTEC, we estimate emissions (+ve flux) and removals (-ve flux) of these gases using atmospheric observations, in situ and satellites, and provide information at “big” country scales
- ❖ We estimate and report various uncertainties, arising from lack of sufficient observations at high quality, atmospheric transport model, inventory emissions etc.



GOSAT-GW data would contribute such inversion analysis to estimate CO₂ and CH₄ fluxes with improved precision