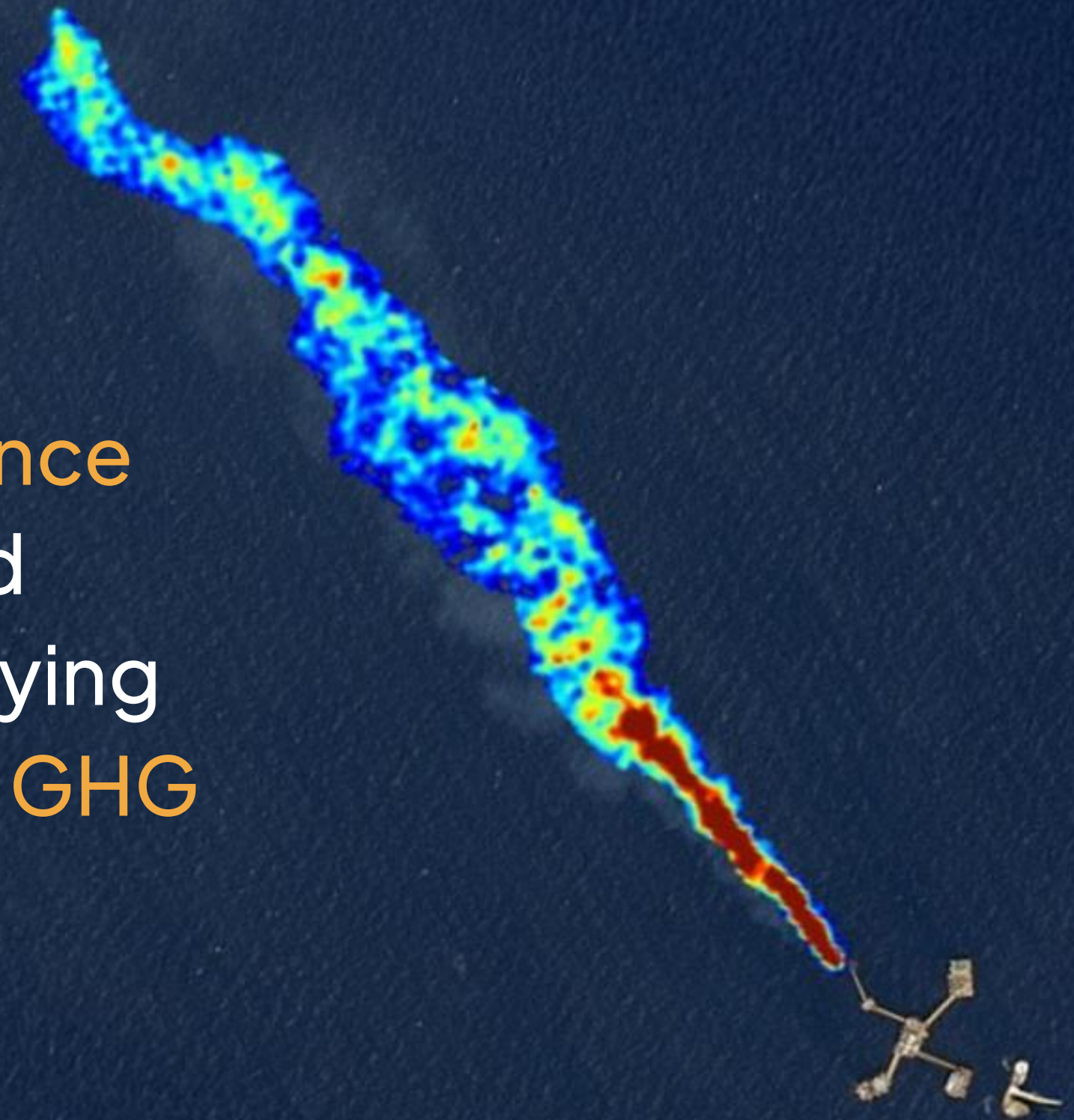




Momentick is an **emissions intelligence** company that delivers accurate and autonomous capabilities for identifying and quantifying **methane and other GHG emissions** on a planetary scale.



Offshore Rig in the Gulf of Mexico 82,109 kg/hour

Confidential

Momentick's solution can detect **58% of all methane** emission sources

32%



Oil & Gas

27%



Livestocks

17%



Waste Management

12%



Agriculture

9%



Coal mines

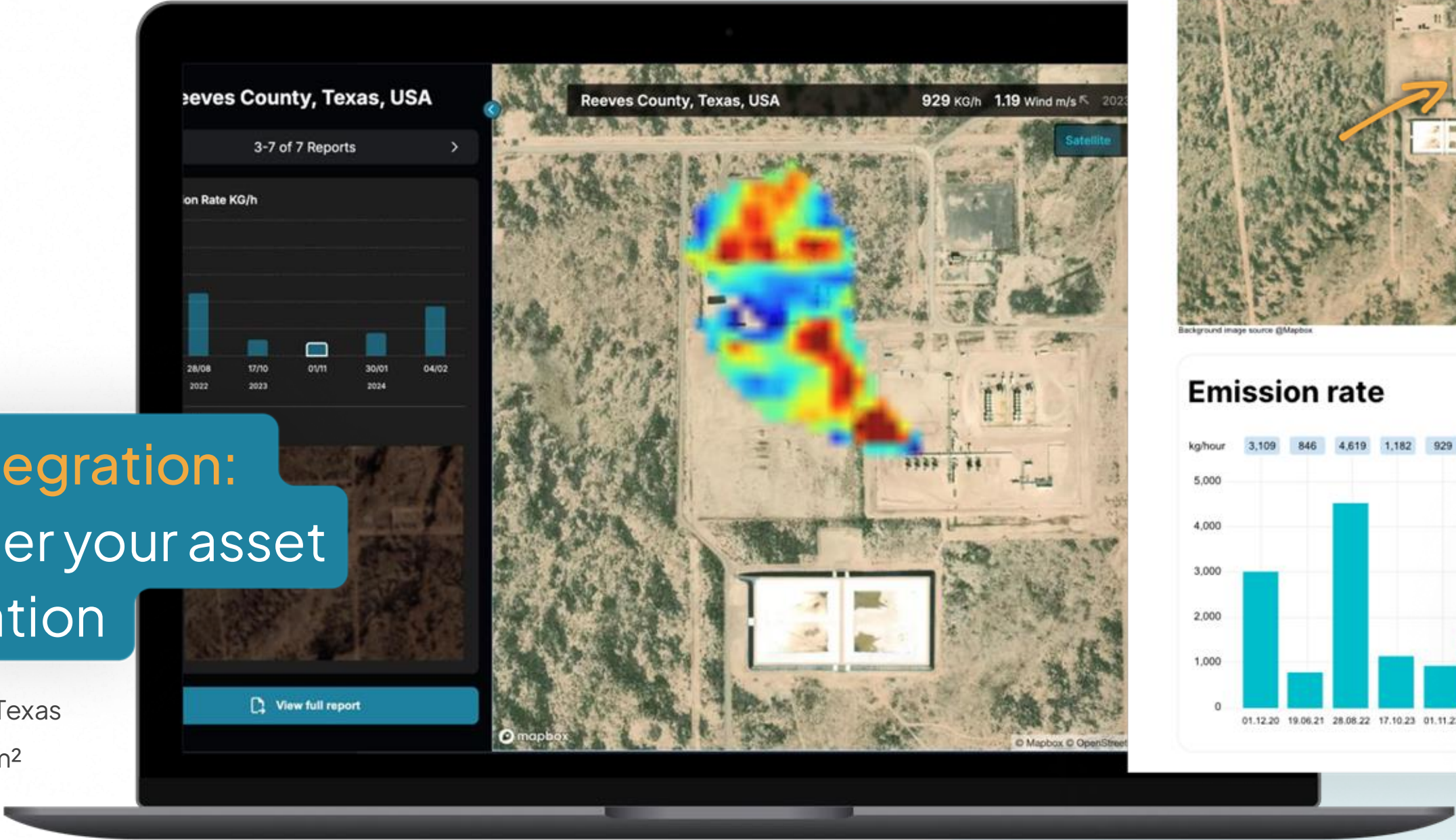


Momentick's core offering

Pinpoint Monitoring Oil & Gas

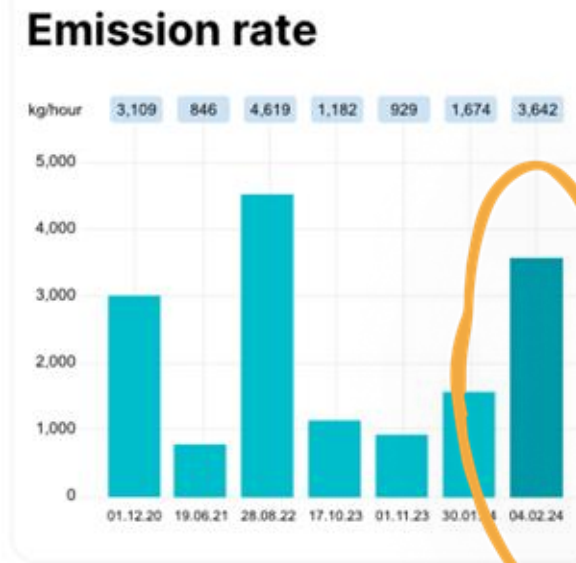
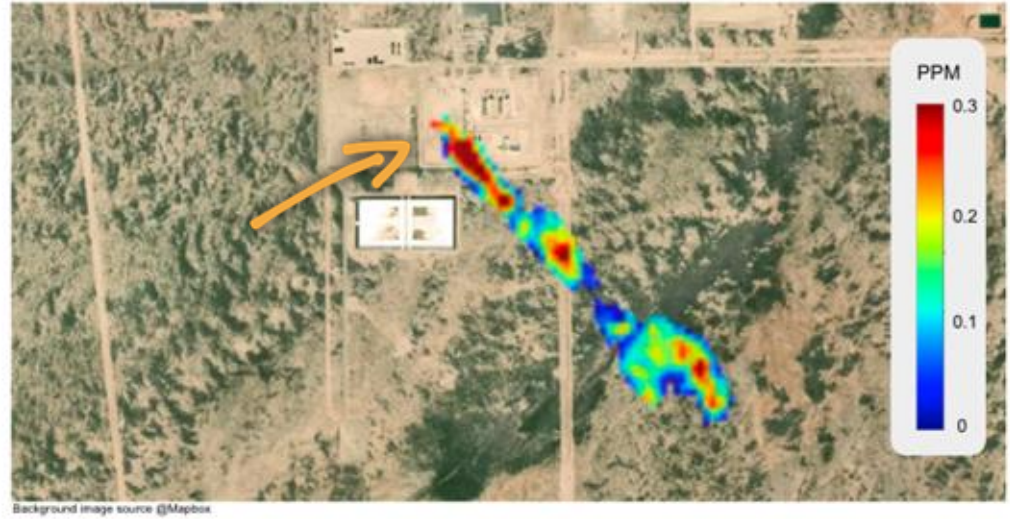
Zero integration:
Just enter your asset
information

Oil & Gas Field in Texas
Coverage: 100 km²



Reeves County, Texas, USA

Date (dd/mm/yy)	Emission Rate	Wind
04.02.2024	3,642 kg/h	9.2 m/s ↘



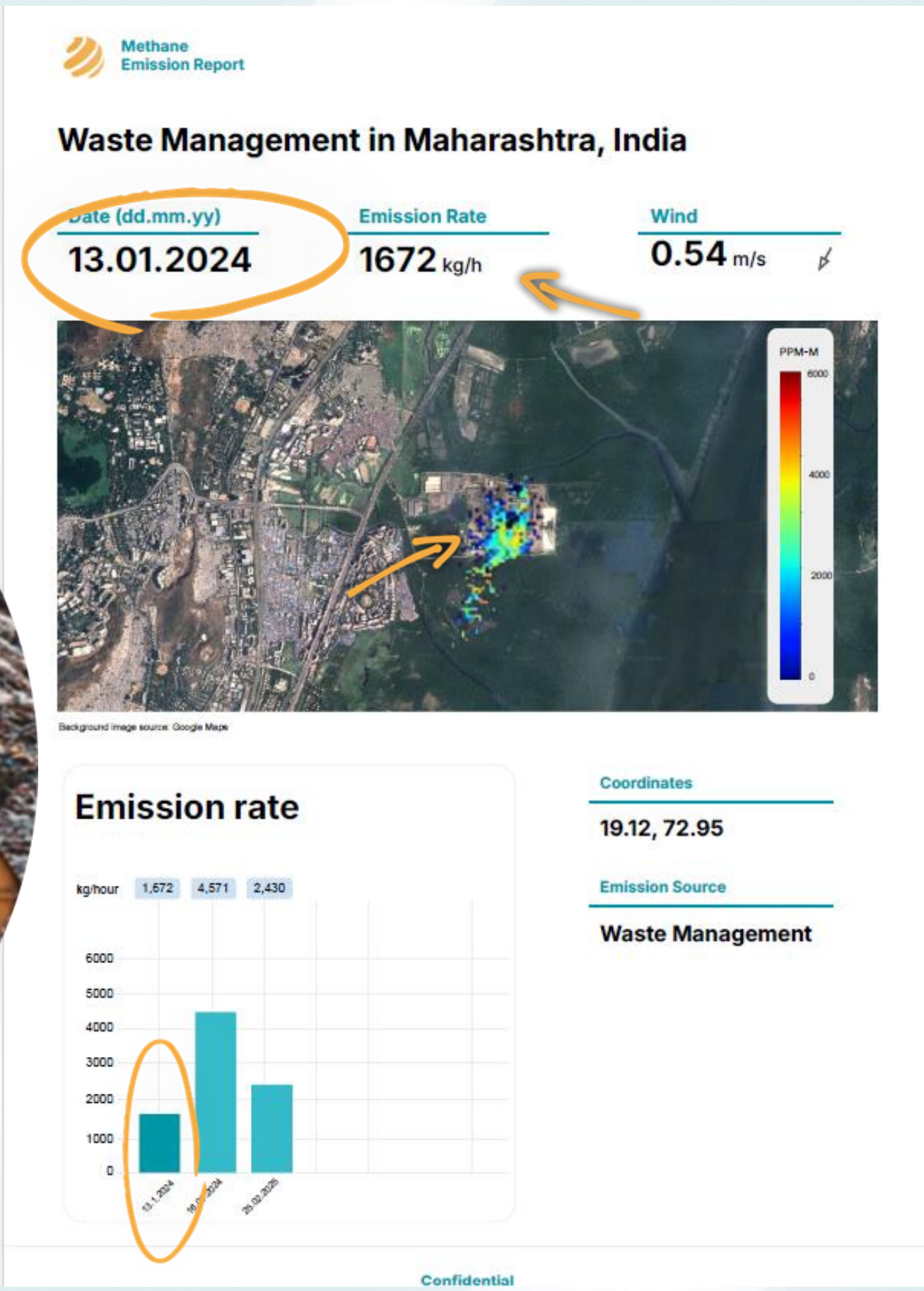
Satellite
Sentinel 2
Coordinates
Emission Source
Oil & Gas Field



Momentick's core offering

Frequent Landfill Monitoring

Zero integration:
Just enter your asset
information

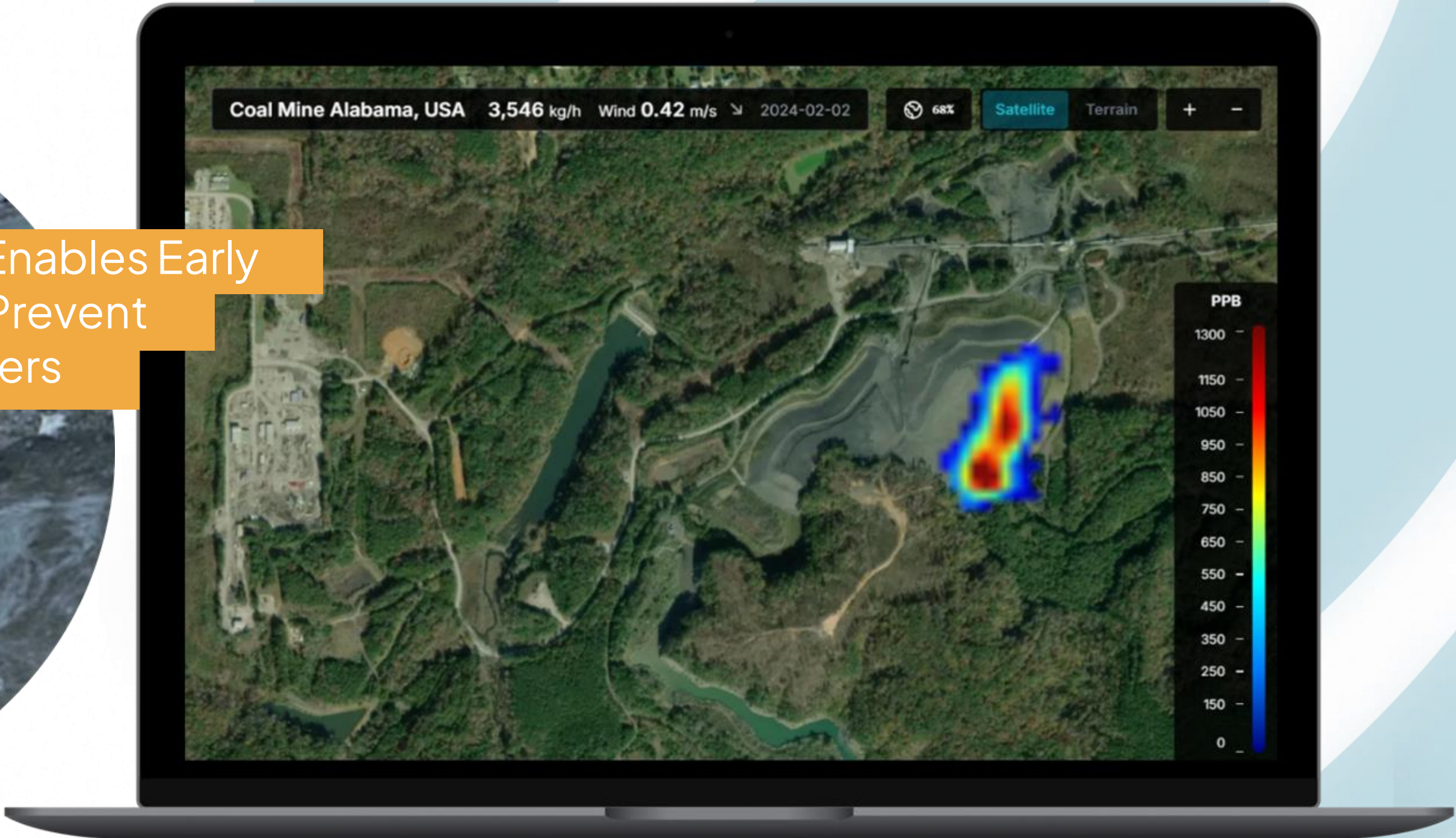


Momentick's core offering

Coal Mine Monitoring



Frequent Monitoring Enables Early Detection and Helps Prevent Explosions and Disasters



Momentick's core offering

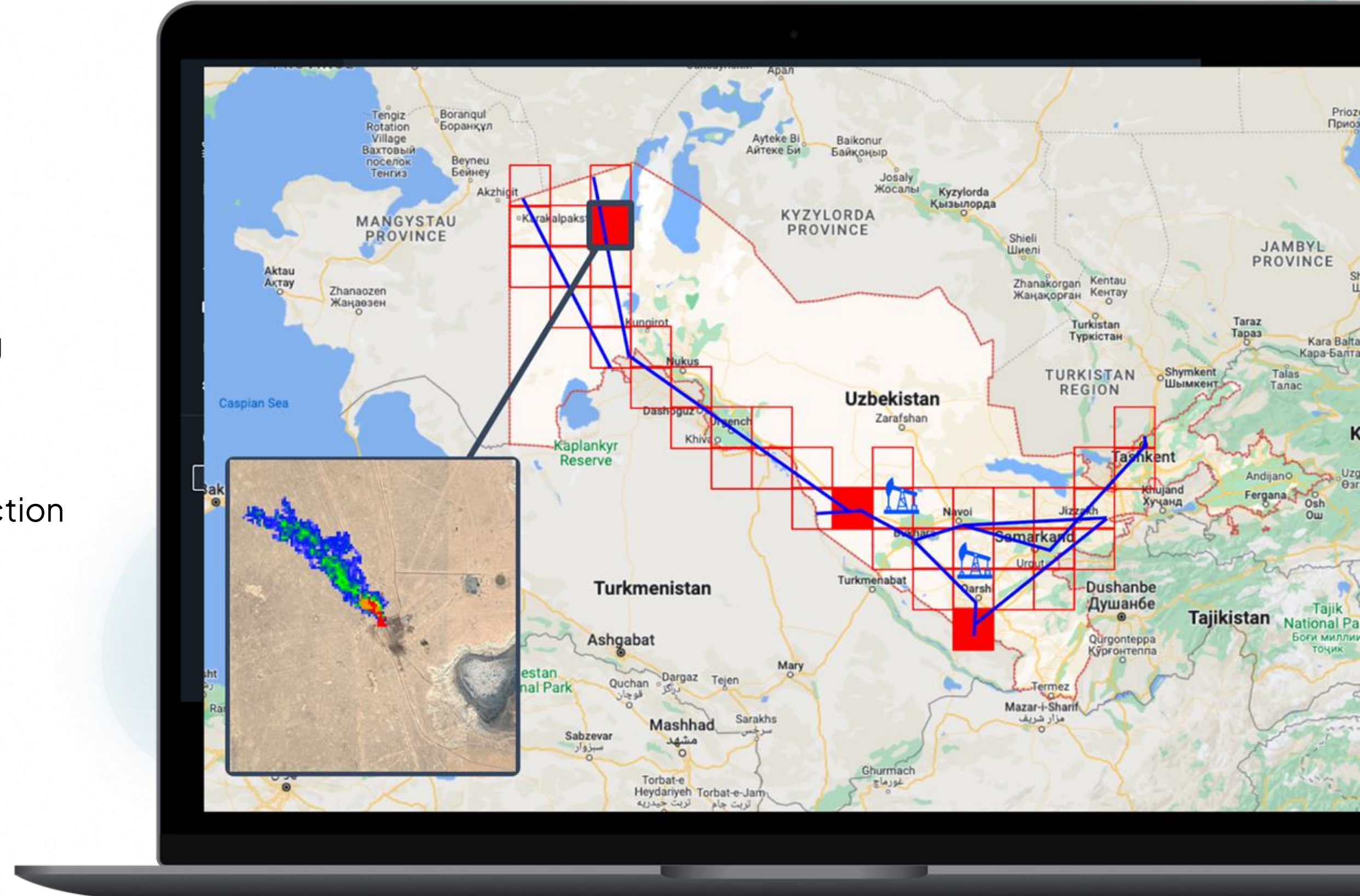
Large Area Monitoring

Increase annual profits by:

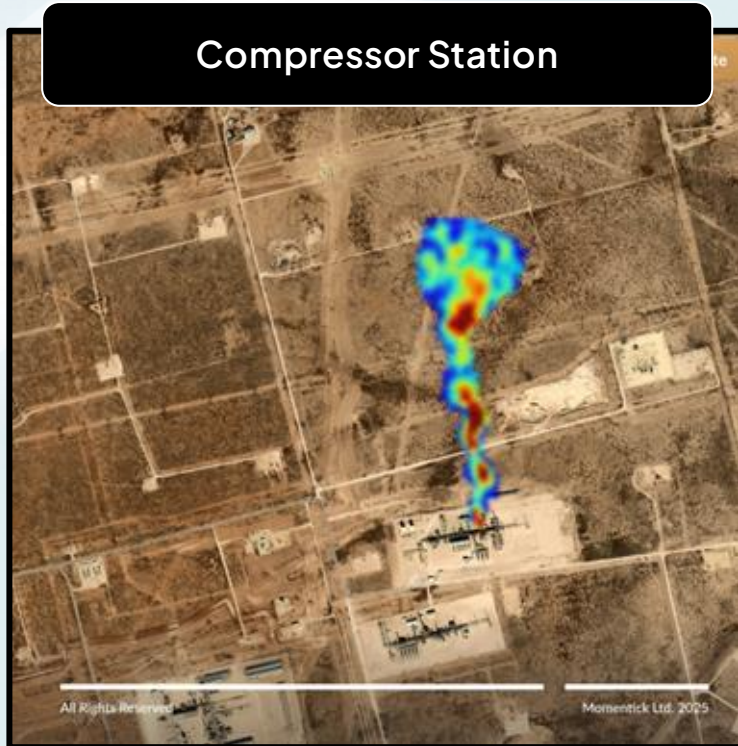
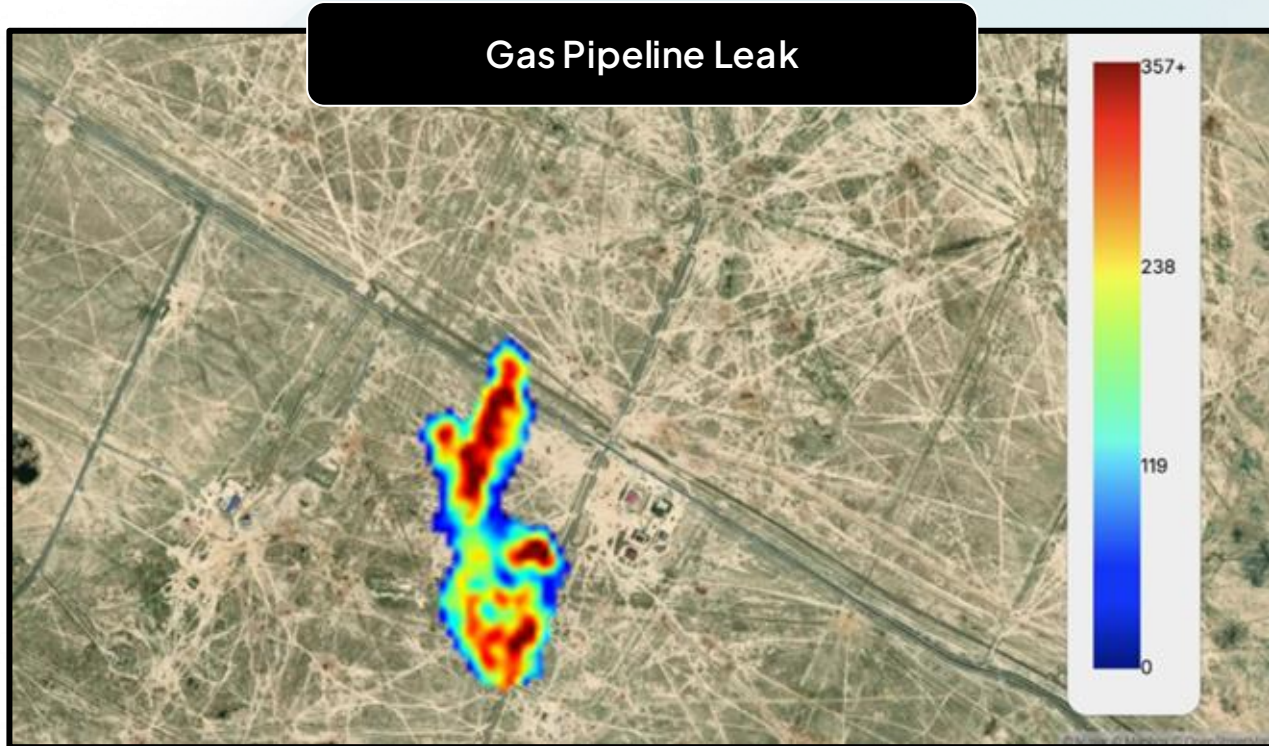
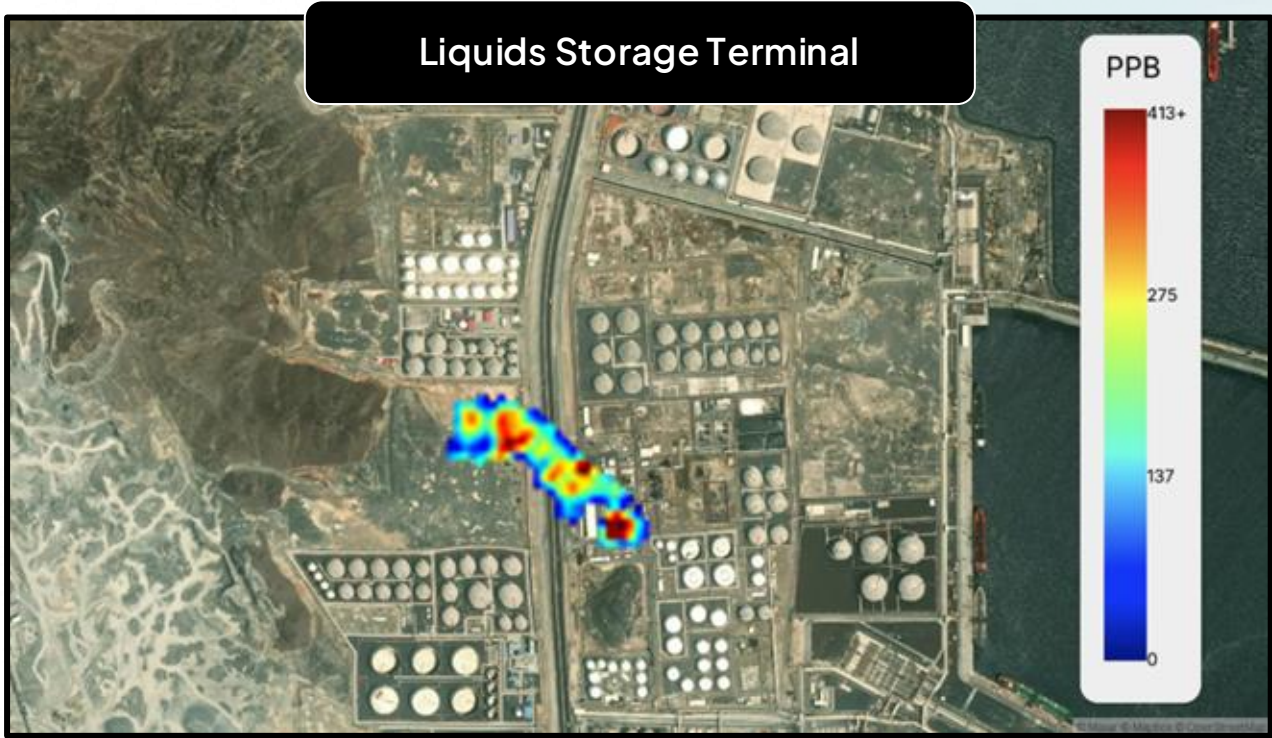
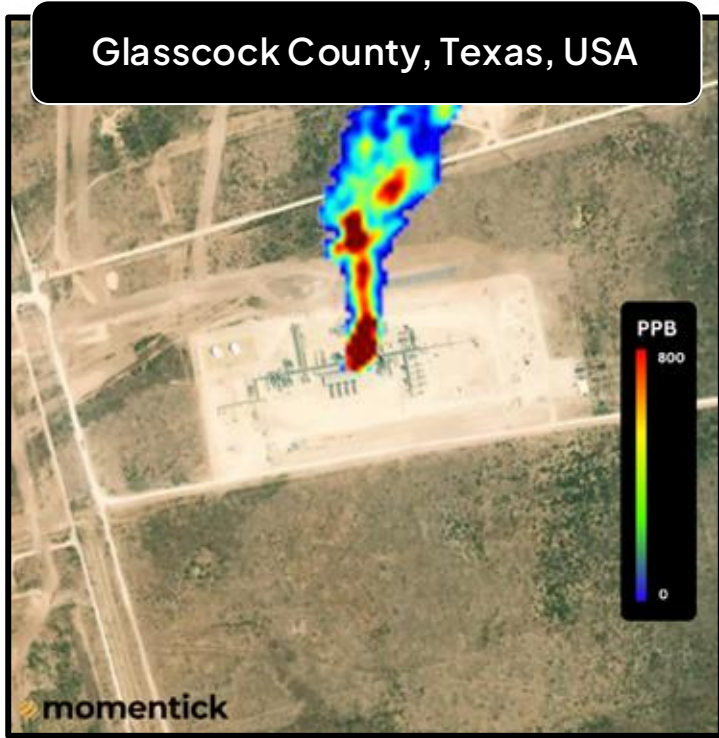
Maximize operational potential.

Detecting unknown methane leaks along natural gas pipelines.

High-frequency monitoring of pipeline systems that leads to an emissions reduction of 80% (according to the IEA).



Oil & Gas sites:



Momentick supports oil & gas and Insurance companies to:



Rapidly reduce GHG emissions



Ensure regulatory compliance



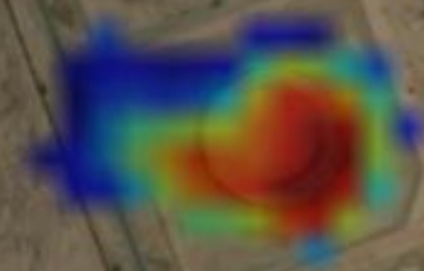
Reduce revenue loss from methane leaks



Prevent explosions & improve safety



Manage risks



Confidential

The **advantages** of Momentick's approach



Multi-satellite for enhanced visibility & global coverage



Software-only company, not limited by specialized hardware



Large area monitoring



Historical data for baseline analysis



Offshore coverage included



Value-driven & cost effective

